

FLEXIBLE BUSINESS APPLICATIONS

# ***Web Time & Expense Module™***

***for Professional Service Time & Billing™***

***Time Entry - Anytime, Anywhere***



Designed for



Microsoft  
Dynamics™ SL

by



SOUTH ANNA  
SOFTWARE

# Web Time & Expense Module™

The Professional Service Time & Billing - Web Time and Expense Entry module provides small to medium businesses the opportunity to achieve cost savings by using the Internet to capture time and expenses from employees and subcontractors. This robust time sheet collection interface allows your time keepers to key their time and expenses from anywhere at any time.

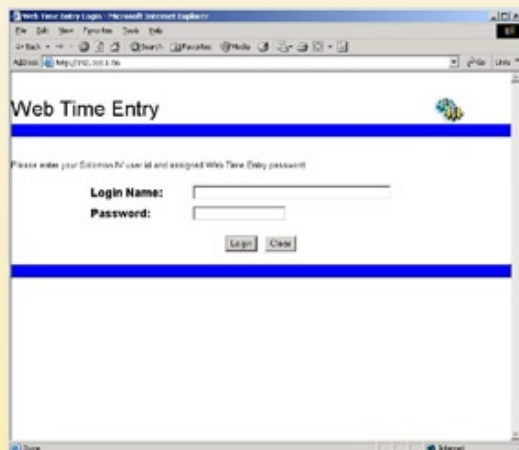
The system features a full timesheet approval process for supervisors to approve the time sheets for the employees they are responsible for. The system is scalable to any size organization. Whether you have 10 employees keying time and expenses from their home offices to 1000 employees keying their time from 16 states, Web Time & Expense Entry is designed to fit your firm's needs.

The Web Time & Expense module is designed to scale from small firms who have their site loaded at a third party ISP (Internet Service Provider) to large firms who have their websites hosted internally. The product can use either the Microsoft Access database engine or the Microsoft SQL Server database engine, depending on your needs.

The system uses XML to transmit updated data (customers, projects, tasks, etc.) to the website's database from the Professional Service Time & Billing System. It also can be automated with Dynamics SL Application Server Module to auto-import the timesheets keyed at the website.

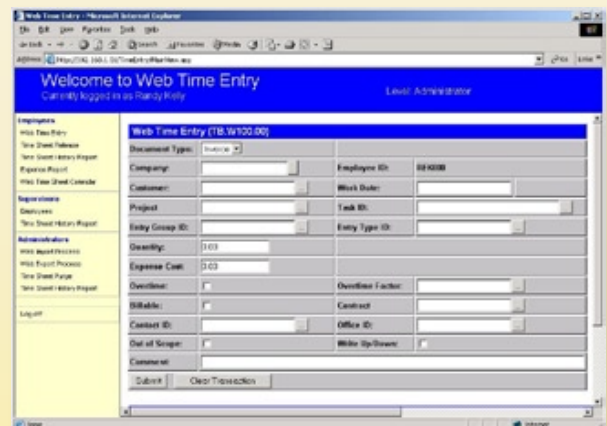
## Take a look inside...

### Login Screen



The system features a full server-side security model, which matches your internal Dynamics SL Professional Service Time & Billing system.

### Time & Expense Entry Screen



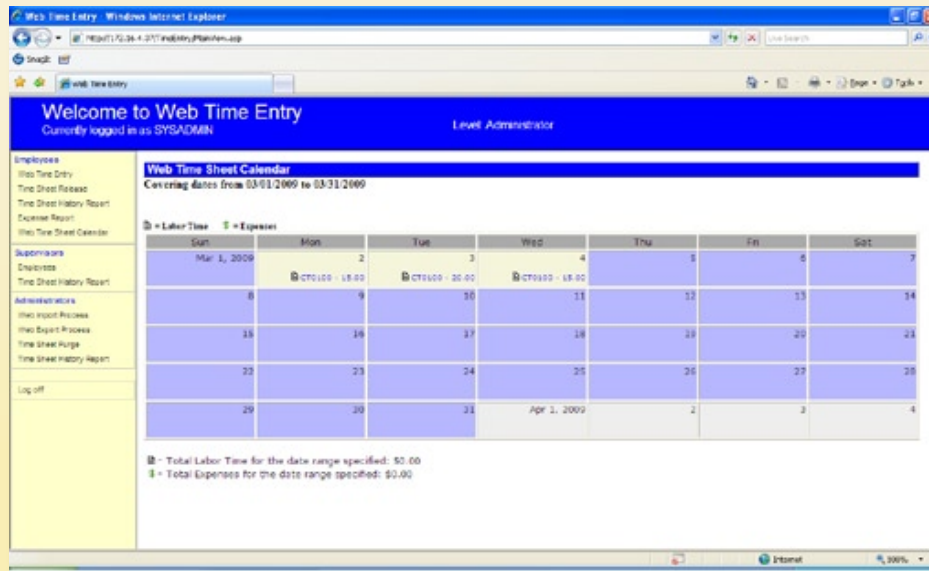
Key both Time and Expenses online in the same screen, just like the LAN based Professional Service Time & Billing.

### Time Sheet History Reports

Work Date	Entry Type	Customer ID	Project	Task	Entry Group	Entry Type	Quantity	Status	Contract	Comments
10/10/2001	Hours	CT0100	NORFOLK	BROWN DESIGN	DEVELOP	BILLABLE	10.0	Approved		
10/11/2001	Hours	CT0100	NORFOLK	UTIGATION	UT	GENERAL	8.0	Approved		
10/12/2001	Hours	CT0100	NORFOLK	BROWN DESIGN	DEVELOP	BILLABLE	10.0	Approved		
10/13/2001	Hours	CT0100	NORFOLK	BROWN DESIGN	CONSULT	WEEKEND	10.0	Approved		
10/14/2001	Hours	CT0100	NORFOLK	BROWN DESIGN	CONSULT	BILLABLE	10.0	Approved		

History reports are also included in the product to fill the reporting needs of the users online.

## Time Sheet Calendar



A rich calendar view is included to enable users to view information for the days they have keyed time sheet data on the website.

## PV Lookup Functionality

Easy to use PV lookup functionality is used throughout the product to assist the user in finding the information they need. This is similar to Dynamics SL's PV, which will add in speeding the learning curve for the users.





# Timesheet Collection Flexibility

## Overview

### Web Time & Entry Includes:

- User friendly time and expenses collection in the same screen for end users.
- An easy to use Calendar report for employee time review.
- A robust and complete time approval process.
- Full Timesheet History Reports.
- A full server-side security model.
- A purge function to help you maintain your website databases.
- Full Dynamics SL Multi-company support.
- Scalable ASP code utilizing XML that works using either Microsoft Access or Microsoft SQL Server as the database engine.
- Optimized code using Procedures, Triggers, etc. for SQL Server.
- Drag and drop website setup through Microsoft FrontPage.
- A one-click switch between database types (Access to SQL Server).
- Supports Third party ISP hosted websites.
- Much, much more....



SOUTH ANNA  
SOFTWARE

South Anna, Inc.  
PO Box 3568  
Glen Allen, VA 23058-3568  
(804) 316-9660  
[www.southannasoftware.com](http://www.southannasoftware.com)